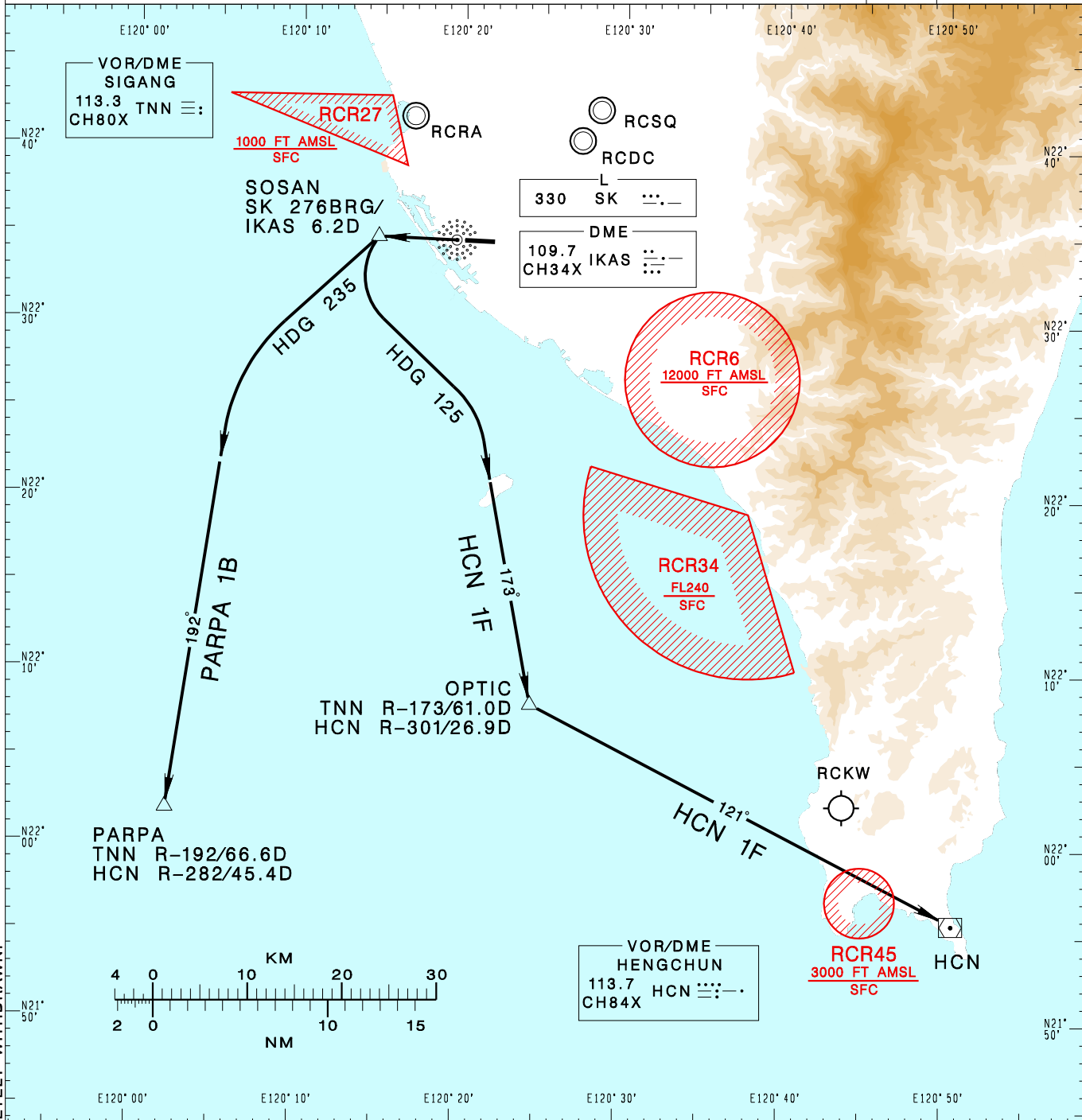


**高雄國際機場**  
KAOHSIUNG INTL AD

RCKH SID  
HCN 1F(RWY27)  
PARPA 1B(RWY27)

KAOHSIUNG APP 124.7 125.7	KAOHSIUNG TWR 118.7 120.7	ATIS 127.8		
Apt Elev: 32'		Trans Level: FL130		Trans Alt: 11,000'
BEARINGS ARE MAGNETIC; DISTANCES ARE NAUTICAL MILES; ELEVATIONS, HEIGHTS IN FEET				



CHANGES: KW NDB COMPLETELY WITHDRAWN.

**HENGCHUN ONE FOXTROT DEPARTURE**  
Climb on RWY HDG until leaving 600ft, then track SK 276BRG to SOSAN, then turn left HDG 125 to track TNN R-173 to OPTIC, then track HCN R-301 to HCN.

**PARPA ONE BRAVO DEPARTURE**  
Climb on RWY HDG until leaving 600ft, then track SK 276BRG to SOSAN, then turn left HDG 235 to track TNN R-192 to PARPA.

**NOTE**

1. Minimum climb gradient required: 4% (245ft/NM) until 2,000ft.
2. Caution: pier cranes, terrain and stacks east, west and south of airport.
3. ATS surveillance required.